



# GMT MONTHLY MEMBERSHIP PROGRESS REPORT

Results as of: 5/31/2019

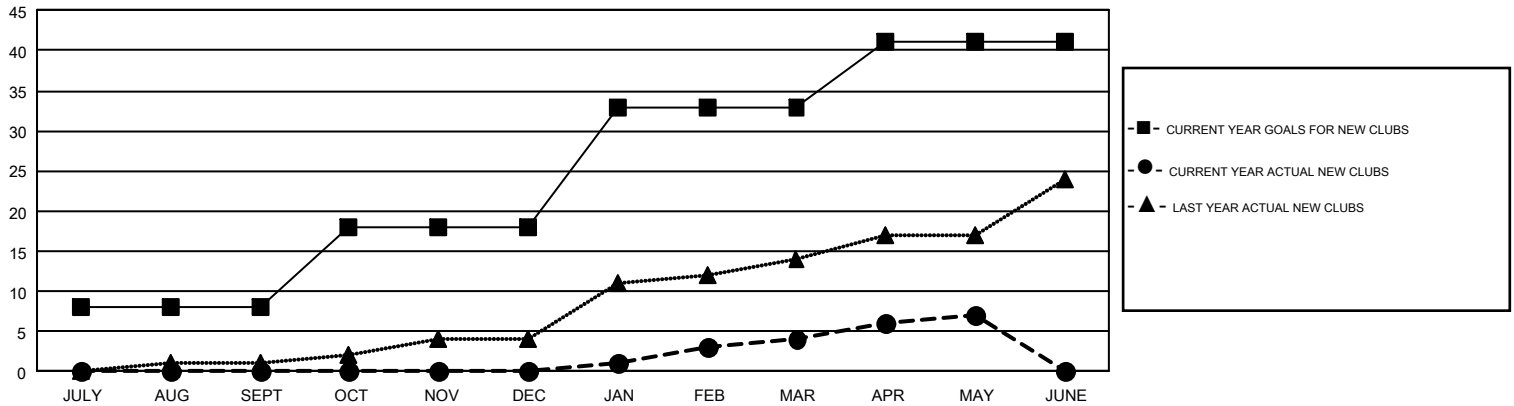
## GMT Constitutional Area 1, Group A

GMT: MAHESH CHITNIS

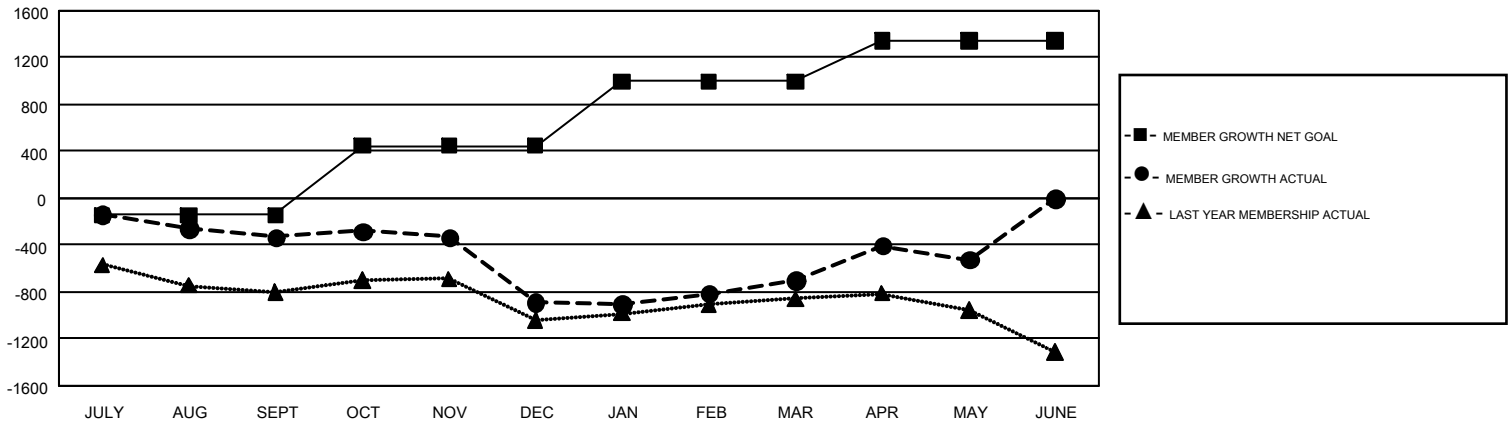
REPORT DOES NOT INCLUDE CLUBS IN UNDISTRICTED AREAS.

Clubs				Members			
RESULTS FOR 2018-2019				RESULTS FOR 2018-2019			
QUARTER	NEW CLUB GOAL	NEW CLUBS	DROPPED CLUBS	QUARTER	MEMBER GROWTH NET GOAL	MEMBER GROWTH ACTUAL	DROPPED MEMBERS ACTUAL (including transfers)
JULY/AUG/SEPT	8	0	12	JULY/AUG/SEPT	-144	851	1,022
OCT/NOV/DEC	10	0	9	OCT/NOV/DEC	593	977	1,437
JAN/FEB/MAR	15	4	4	JAN/FEB/MAR	550	1,108	811
APR/MAY/JUNE	8	3	3	APR/MAY/JUNE	342	907	685

GOALS AND ACTUAL NEW CLUBS CUMULATIVE



GOALS AND ACTUAL MEMBERS CUMULATIVE



DROPPED CLUBS: 28	896 CLUBS OF 1,537 ADDED 1 OR MORE NEW MEMBERS	<b>GENDER DISTRIBUTION</b>
<b>DROPPED MEMBERS</b>	<a href="#">CLICK HERE FOR CUMULATIVE MEMBERSHIP DATA</a>	MALE                    28,523 (64.31%)
DECEASED                    571		FEMALE                    15,832 (35.69%)
CLUB CANCELLED                88		TOTAL FAMILY UNIT MEMBERS                    8,144
OTHER                            3,296		FAMILY MEMBERS PAYING HALF DUES                    4,204
<b>TOTAL                            3,955</b>		